

Al Farah Agriculture

PRODUCTS CATALOGUE



AL FARAH
modern agriculture

SISTER COMPANY

شركة و مشاتل المنى



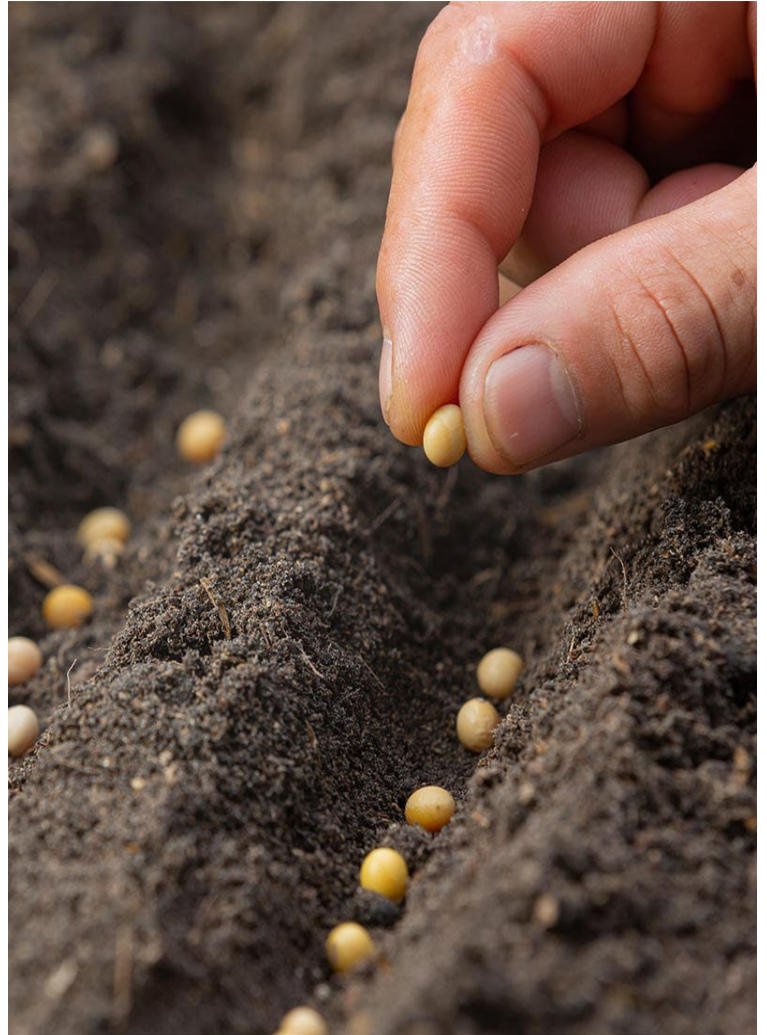
**Our Varieties
Are Tested**

2023

About Al Farah

When you shop with Al Farah, you'll receive the best goods and services. We have a track record of offering dependable vegetable seeds to farmers and gardeners. Our seeds have the best germination rates, ensuring success for both novice and expert growers.

We at Al Farah are very concerned about our customers. Our grower-friendly terms are appropriate for your company. We charge fair prices for the goods we sell.



Sweet Pepper



SISTER COMPANY

شركة و مشاتل المنى





Great



- Fruit Type: Lamuyo
- Color: Green to Red.
- No. of Lobes: 3-4
- Fruit weight: 250 to 350 g
- Added Value: Hybrid pepper suitable for greenhouse and open field production. Ability to maintain sets throughout the season and provide strong yields, tall plant with sufficient fruit cover to protect from sunburn. High flowering. Early maturity. Medium fruit thickness.
- Resistance: BST-1, 2, 3, TMV
- Size: 18cm*8cm

Saidoon

- Fruit Type: Lamuyo.
- Color: Green to Red.
- No. of Lobes: 3-4
- Fruit weight: 300 to 400 g.
- Added Value: Hybrid pepper suitable for greenhouse and open field production. High fruit thickness. Mid-early maturity.
- Size: 22cm*6cm



Green Blocky

- Fruit Type: Blocky.
- Color: Green to Red.
- No. of Lobes: 4
- Fruit weight: 250 to 300 g.
- Added Value: Hybrid pepper suitable for greenhouse and open field production. Very high fruit thickness. Mid-early maturity.
- Size: 10cm*9cm





Blocky Red

- Fruit Type: Blocky.
- Color: Green to Red.
- No. of Lobes: 4
- Fruit weight: 250 to 300 g
- Added Value: Hybrid pepper suitable for greenhouse and open field production. Medium fruit thickness. Mid-early maturity.
- Size: 11cm* 8cm

Zena Red

- Fruit Type: Blocky.
- Color: Green To Red.
- No. of Lobes: 3-4
- Av. Size: 10.5cm*8.5cm
- Av. Fruit weight: 300 gr.



Blocky Yellow

- Fruit Type: Blocky.
- Color: Green to Yellow.
- No. of Lobes: 4
- Fruit weight: 250 to 300 g.
- Added Value: Hybrid pepper suitable for greenhouse and open field production. High fruit thickness. Early maturity.
- Size: 9cm*7cm



Dalta

- Fruit Type: Lamuyo
- Color: Green to Yellow.
- No. of Lobes: 3-4
- Fruit weight: 350 to 450 g.
- Added Value: Hybrid pepper suitable for greenhouse and open field production.
- Size: 16cm*8cm

Nizar

- Fruit Type: Lamuyo
- Color: Green To Red
- No. of Lobes: 3-4
- Av. Size: 17cm*7.5cm
- Av. Fruit weight: 400 gr.



Olma

- Fruit Type: Blocky.
- Color: Green To Yellow To Orange.
- No. of Lobes: 4
- Av. Size: 9.5cm*8.5cm
- Av. Fruit weight: 280 gr.





Karma

- Fruit Type: Marconi.
- Color: Green To Red.
- No. of Lobes: 1-2
- Av. Size: 25cm*5cm
- Av. Fruit weight: 200 gr.

Halabi Taweel

- Fruit Type: Marconi
- Color: Green to Red.
- No. of Lobes: 1-2
- Fruit weight: 200 to 250 g.
- Added Value: Hybrid pepper suitable for greenhouse and open field production. Medium flowering. Mid-early maturity.
- Size: 26cm* 6cm



Halabi

- Fruit Type: Conical
- Color: Green To Red.
- No. of Lobes: 1-2
- Av. Size: 24.5cm*4.5cm
- Av. Fruit weight: 150 gr.



Laylaki

- Fruit Type: Blocky
- Color: Purple to Orange.
- No. of Lobes: 3 -4
- Fruit weight: 150 to 200 g.
- Added Value: Hybrid pepper suitable for greenhouse and open field production. Very high fruit thickness. Early maturity. High Flowering.
- Size: 8cm*7cm

Ram SP620

- Fruit Type: Marconi
- Color: Green to Red.
- Fruit weight: 150 to 240 g.
- Added Value: Hybrid pepper suitable for greenhouse and open field production. High fruit thickness. Medium flowering.
- Size: 24cm*4cm



Ram SP217

- Fruit Type: Blocky
- Color: Green to Orange.
- No. of Lobes: 4
- Fruit weight: 200 to 270 g.
- Added Value: Hybrid pepper suitable for greenhouse and open field production. High fruit thickness. Mid-early maturity.
- Size: 8cm* 8cm



RAM SP9

- Fruit Type: Dolma
- Color: Light Green to Red. 3 Lobed.
- Fruit length: 6-7 cm
- Added Value: Vigorous stable plant. Hybrid variety Suitable for Greenhouse and Open Field. High hotness. Mid-early maturity. Semi-smooth Texture. Suitable for pickling.

Tomato



AL FARAH
modern agriculture

SISTER COMPANY

شركة و مشاتل المنى





Lolo

- Plant characteristics: Indeterminate.
- Season: All Seasons.
- Shape & Color: Round, Glossy red fruit.
- Weight: 100 to 110 g.
- Added value: Hybrid Tomato for greenhouse production. Suitable for single picking and truss picking. Firm fruit. Long shelf life. Early. 8-10 fruits per Cluster.
- Tolerance: TMV, V, F, TYLCV.

Jawaher

- Plant characteristics: Indeterminate.
- Season: All Seasons.
- Shape & Color: Cluster Round, red fruit
- Weight: 90 to 100 g.
- Added Value: Hybrid Tomato for greenhouse production. Firm Fruit. High Yield. 10-15 fruits per Cluster.
- Tolerance: TMV, V, F, TYLCV.



Boshra

- Plant characteristics: Indeterminate.
- Season: All Seasons.
- Shape & Color: Cluster Round, red fruit.
- Weight: 25-30 g.
- Added Value: Cocktail variety. Long cluster. 75-80 days for maturity after transplanting. 16-20 fruits per Cluster.
- Tolerance: TMV, V, F, TYLCV.

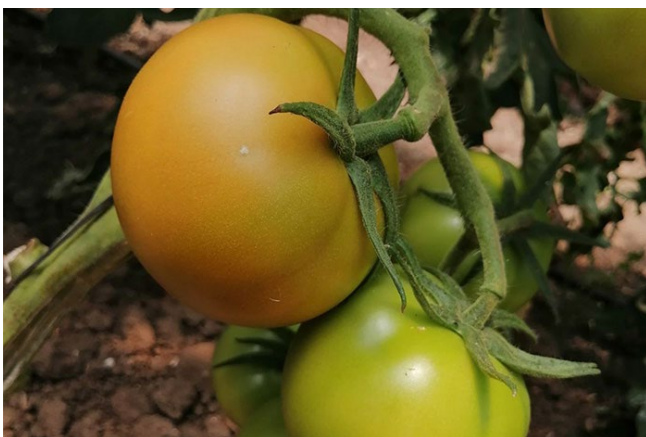


No. 643

- Plant characteristics: Indeterminate.
- Season: All Seasons.
- Shape & Color: Cluster Round, red fruit.
- Weight: 120 to 140 g.
- Added Value: Medium Early Maturity. 6-8 fruits per Cluster. Round & very good shelf life. 6-8 fruits per Cluster.
- Tolerance: TMV, V, F, TYLCV.

Rahaf

- Plant characteristics: Indeterminate. very vigorous.
- Season: All Seasons.
- Shape & Color: Deep Oblate. Bloody red
- Fruit Weight: 270 to 300 g.
- Added Value: Mid- early maturity. Suitable for greenhouse. Firm Fruit. Long shelf life. Good setting under high temperature condition. Very High Heat tolerance. Semi-open calyx. 4-6 fruits per Cluster.
- Resistance: V, F-1, 2, N, TOMV, TYLCV, TSWV, FCRR, CF, Late Blight.



Raghad

- Plant characteristics: Indeterminate. very vigorous.
- Season: All Seasons.
- Shape & Color: Round. Bright red.
- Fruit Weight: 200 to 250 g.
- Added Value: Maturity after 80 days from transplant. Uniform Shoulders. Suitable for greenhouse. Firm Fruit. Long shelf life. Good setting under high temperature condition. Open calyx. 4-6 fruits per Cluster.
- Resistance: V, F-1, 2, N, TOMV, TYLCV, TSWV, FCRR, CF, Late Blight.



Ram IT2

- Plant characteristics: Indeterminate. very vigorous.
- Season: All Seasons.
- Shape & Color: Round. Light red
- Fruit Weight: 280 to 380 g.
- Added Value: Mid- early maturity. Suitable for greenhouse. Medium Fruit firmness. very good shelf life. Good setting under high temperature condition. High Heat tolerance. Semi-open calyx. 5-7 fruits per Cluster.
- Resistance: TMV, V, F, TYLCV.

Leen

- Plant characteristics: Indeterminate. very vigorous.
- Season: mainly Spring.
- Shape & Color: Round to flat. Bright Red
- Fruit Weight: 350- 450 g.
- Added Value: Mid- early maturity. Suitable for greenhouse. High firmness. Good shelf life. Very good setting under high temperature condition. Heat tolerance. Open calyx. 5-7 fruits per Cluster.
- Resistance: V, F-1, 2, N, TOMV, TYLCV, TSWV, FCRR, CF.



Wisal

- Plant characteristics: Determinate Hybrid variety. Very vigorous. Strong bushy plant habit.
- Season: Spring- Summer
- Shape & Color: Round. Red.
- Fruit Weight: 150- 180 g.
- Added Value: Mid-Early. Maturity 75-85 days after transplanting. Very Long Shelf Life. Close calyx. Very productive of high standards fruit quality.
- Tolerance: TMV, V, F, N & Tuta absoluta (good)- TYLCV (high).

Cucumber



AL FARAH
modern agriculture

SISTER COMPANY

شركة و مشاتل المنى



Al-Mona

Fall Cucumber



Ofok

- Plant characteristics: Multi flowering on the main stem with limited side shoots.
- Season: Autumn.
- Color: Dark green.
- Length: 15- 16 cm.
- Added value: High plant vigor. Medium ribbed fruit.
- Resistance: CMV, CVYV, PRSP, WMV, ZYMV & PM.

Khareef

- Plant characteristics: Multi flowering with side shoots and High Vigor.
- Season: Autumn.
- Color: Green
- Length: 14-16 cm.
- Added value: High production. High ribbed fruit. 2-3 fruits per node.
- Resistance: CMV, CVYV.



Yasmina

- Plant characteristics: Multi flowering with No side shoots and short distance between nodes.
- Season: Autumn.
- Color: Dark green shiny fruit.
- Length: 12-14 cm.
- Added value: Multi variety. Early. High quality, Crisp, High ribbed fruits. Long shelf life. 5 to 7 fruits per node.

Winter Cucumber



Winter

- Plant characteristics: medium vigor and multi flowering with sides shoots.
- Season: Autumn-Winter
- Color: Dark Green
- Length: 14-18 cm.
- Added value: Very high setting under cold weather. Highly ribbed fruit. 3 to 4 Fruits per node. 2 to 3 fruits per side shoot.
- Resistance: CMV, WMV, ZYMV, P.

YD

- Plant characteristics: High vigor and Multi flowering with limited side shoots.
- Season: Autumn-Winter.
- Color: Green
- Length: 16 cm.
- Added value: 3 to 4 Fruits per node. 1 to 3 fruits per side shoot. Medium ribbed fruit.



Mayar

- Plant characteristics: High vigor and Multi flowering with sides shoots.
- Season: Winter.
- Color: Light Green to Green
- Length: 15-17 cm.
- Added value: 2 to 4 Fruits per node on the main stem. 1 to 2 fruits per side shoot. Medium to highly ribbed fruit.

Spring Cucumber



Jawad

- Plant characteristics: Vigor open habit plant, bears the fruits on the main stem. In some rare cases, multi flowering with lateral sides.
- Season: Spring & late summer.
- Color: Medium dark green
- Length: 16-18 cm.
- Added value: Recommended for spring & late summer in greenhouses or where the temperature does not exceed 40 °C, otherwise some male flowers can be noticed. Well known variety in the Middle East markets. High ribbed fruit. 3-4 fruits per node.

Spicy Pepper



SISTER COMPANY

شركة و مشاتل المنى





RAM HP1

- Fruit Type: Cayenne
- Color: Green to Red.
- Fruit length: 24- 28 cm
- Added Value: Hybrid variety Suitable for Greenhouse and Open Field. Heat Tolerance. Uniform Fruit. Mid-early maturity. Semi-smooth Texture.

RAM HP4

- Fruit Type: Cayenne
- Color: Light Green to Red.
- Fruit length: 20- 24 cm
- Added Value: Vigorous plant. Hybrid variety Suitable for Greenhouse and Open Field. Very hot. Early maturity. Smooth Texture.



RAM HP9

- Fruit Type: Cayenne
- Color: Light Green to Bright Red.
- Fruit length: 26 cm
- Added Value: Hybrid variety Suitable for Greenhouse and Open Field. Mid-early maturity. Very smooth Texture.



Beauty

- Fruit Type: Cayenne
- Color: Dark Green to Red.
- Fruit length: 16-18 cm
- Added Value: Hybrid variety Suitable for Greenhouse and Open Field. Very hot. Early maturity. Very smooth Texture.

Har

- Fruit Type: Cayenne
- Color: Light Green to Red.
- Fruit length: 18-19 cm
- Added Value: Hybrid variety Suitable for Greenhouse and Open Field. Very hot. Early maturity. Very smooth Texture.



Ghazal

- Fruit Type: Cayenne
- Color: Dark Green to Red.
- Fruit length: 16-19 cm
- Added Value: Hybrid variety Suitable for Greenhouse and Open Field. Very hot. Mid-early maturity. Very smooth Texture.



Halabi Har

- Fruit Type: Macroni
- Color: Dark Green to Red.
- Fruit length: 17-21 cm
- Added Value: Hybrid variety Suitable for Greenhouse and Open Field. hot. Mid-early maturity. Semi- smooth Texture. Long conical fruit.

RAM HP17

- Fruit Type: Cayenne
- Color: Dark Green to Red.
- Fruit length: 15-18 cm
- Added Value: Hybrid variety Suitable for Greenhouse and Open Field. hot. Mid-early maturity. Very smooth Texture. Thin Straight.



RAM HP19

- Fruit Type: Jalapeño
- Color: Light Green (Yellowish green) to Red.
- Fruit length: 8-9 cm
- Added Value: Mini hot pepper. Hybrid variety Suitable for Greenhouse and Open Field. High hotness. Mid-early maturity. Very smooth Texture.



Habanero Orange

- Fruit Type: Habanero.
- Color: Light green to yellowish orange.
- Fruit length: 3-5 cm
- Added Value: Hybrid variety Suitable for Greenhouse and Open Field. Very hot.

Prad

- Fruit Type: Jalapeño
- Color: Dark Green to Red.
- Fruit length: 8-9 cm
- Added Value: Hybrid variety Suitable for Greenhouse and Open Field. Very hot. Very early maturity. Very smooth Texture.



RAM HP23

- Fruit Type: Charleston.
- Color: Glossy green to red.
- Fruit length: 14-16 cm
- Added Value: Hybrid variety Suitable for Greenhouse and Open Field.
- Early maturity. Very smooth Texture.



Habanero Red

- Fruit Type: Habanero.
- Color: Light green to red.
- Fruit length: 3-5 cm
- Added Value: Hybrid variety Suitable for Greenhouse and Open Field. Very hot. Semi-smooth Texture.

Habanero Yellow

- Fruit Type: Habanero.
- Color: Light green to Yellow.
- Fruit length: 3-5cm
- Added Value: Hybrid variety Suitable for Greenhouse and Open Field. Very hot. Smooth Texture.



Habanero Chocolate

- Fruit Type: Habanero.
- Color: Light green to Dark brown.
- Fruit length: 3-5 cm
- Added Value: Hybrid variety Suitable for Greenhouse and Open Field. Very hot.

Eggplant



AL FARAH
modern agriculture

SISTER COMPANY

شركة و مشاتل المنى





Jezeene

- Fruit type : Oval elongated
- Color : Dark Black
- Calyx: Long.
- Weight: 500 - 900 g
- Added Value: Hybrid variety suitable for greenhouse and open field cultivation. No seeds in the fruit after maturity. Early Maturity.

Milano

- Fruit type : Oval Round
- Color: Dark Black
- Calyx: Short.
- Weight: 650- 950 g
- Added Value: Hybrid variety suitable for open field cultivation. low seeds presence in the fruit after maturity. Mid- early maturity.



RAM EGG13

- Fruit type : Cylindrical type.
- Color: Black.
- Calyx: Long.
- Weight: 80- 150 g.
- Added Value: Hybrid variety suitable for greenhouse and open field cultivation. Early maturity.

Squash



SISTER COMPANY

شركة و مشاتل المنى





Shams

- Plant characteristics: High Vigor and multi flowering.
- Season: Autumn-Spring- Summer
- Color & Shape: Green. Bulbous shape.
- Length: 8-10 cm
- Added value: High production. Early Maturity.
- Tolerance: Powdery mildew.

RAMSQ 04

- Plant characteristics: High Vigor and multi flowering.
- Season: Autumn- Spring- Summer.
- Color & Shape: Light green with distinct white points. Cylindrical shape.
- Length: 16- 18 cm.
- Added value: Uniform Fruit. Early Maturity. High production.
- Tolerance: Powdery mildew.



Melon and Watermelon



SISTER COMPANY

شركة و مشاتل المنى



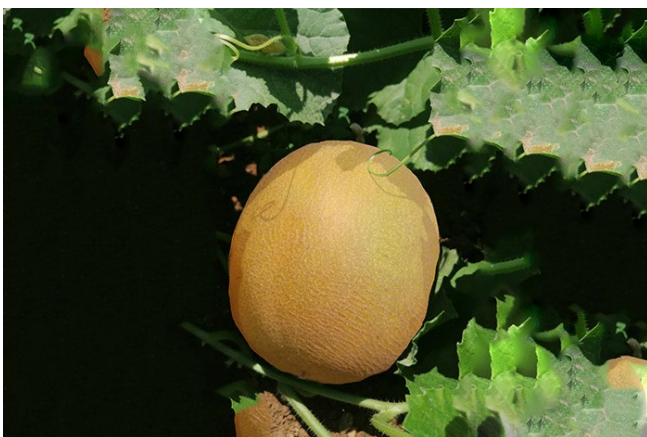


Shahd

- Fruit Type: Ananas Type
- Fruit Shape: Oval to Round
- Fruit Weight: 2– 3 Kg
- Skin Color: Light Orange
- Flesh Color: Orange
- Added Value: Good plant vigor. Fully Netted Fruit with Sweet taste and small cavity. High Productivity plant. Suitable for outdoor and indoor plantation.
- Resistance: F0, F1, F2, DM and PM 1.

RAM MEL01

- Fruit Type: Ananas Type
- Fruit Shape: Elongated
- Fruit Weight: 3 – 4 Kg
- Skin Color: Orange
- Flesh Color: Orange
- Added Value: High plant vigor. Fully netted fruit with very sweet taste and small Cavity. Suitable for outdoor and indoor plantation.
- Resistance: F0, F1, F2, DM and PM 1.



RAM MEL13

- Fruit Type: Galia Type
- Fruit Shape: Round
- Fruit Weight: 2 – 4 Kg
- Skin Color: Orange
- Flesh Color: Light green
- Added Value: Very High plant vigor. Fully netted fruit with sweet taste. Suitable for outdoor and indoor plantation. Mid- early Maturity. High plant productivity. 8 to 10 fruits per plant.
- Resistance: F0, F1, F2 and PM 1.

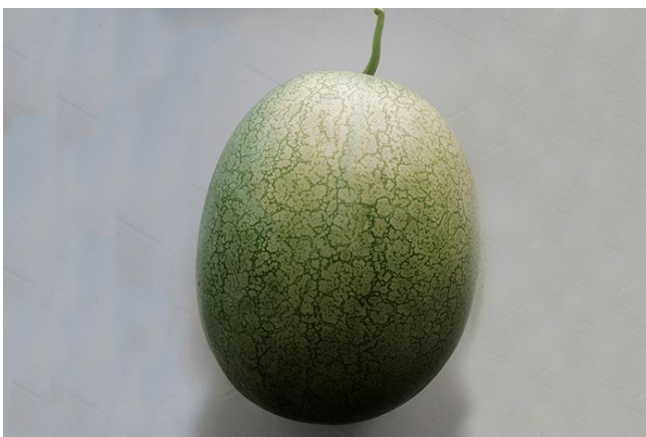


RAM MEL14

- Fruit Type: Canary Type
- Fruit Shape: Elongated
- Fruit Weight: 2 – 3 Kg
- Skin Color: Rough yellow
- Flesh Color: White
- Added Value: High plant vigor. Fruit with Sweet taste. Good plant productivity. Mid-early maturity. Extended shelf life.
- Resistance: F0, F1, F2 and PM 1.

RAM MEL15

- Fruit Type: Charentais Type
- Fruit Shape: Round
- Fruit Weight: 1.5 – 2 Kg
- Skin Color: Orange
- Flesh Color: Dark Orange
- Added Value: Fully netted fruit with sweet taste and small cavity. Suitable for outdoor and indoor plantation. Very early Maturity. Good plant vigor. Good productivity. Good shipper.
- Resistance: F0, F1, F2, and PM 1.



RAM WM14

- RAM WM14
- Fruit Type: Charleston Type.
- Fruit Shape: Round
- Fruit Weight: 8.5 – 10 Kg
- Skin Color: Light Green with distinct green lines.
- Flesh Color: Red
- Added Value: Sweet taste.



RAM WM19

- Fruit Type: Crimson Type.
- Fruit Shape: Oval
- Fruit Weight: 9 – 12 Kg
- Skin Color: Pattern of light and dark green bands.
- Flesh Color: Dark Red
- Added Value: Very sweet taste. Early Maturity.



CALL US FOR A FREE QUOTE

+971 56 202 0603

+971 58 513 9120

+971 50 239 9662

EMAIL

info@al-farah.ae

ADDRESS

Business center 1, M floor,
The Meydan hotel,
Nad Al Sheba, Dubai, UAE.